

«Interregional Distribution Grid Company of North-West» JSC («IDGC of North-West» JSC)





«IDGC of North-West» JSC general information

Company	Region area, km ²	Population	Natural persons	Legal entities
IDGC of North-West	1 585 900	6 690 300	1 424 977	38 000
Comparison with Russia	9,2%	5,2%		

Characteristics	Overhead and cable transmission lines length	35 kV and higher voltage substations		6-10/0.4 kV substations		Personnel	Deterioration of fixed assets
	km	units	MVA	units	MVA		%
IDGC of North-West	169 310	1 141	17 485	35 403	6 685	13 894	63,7%

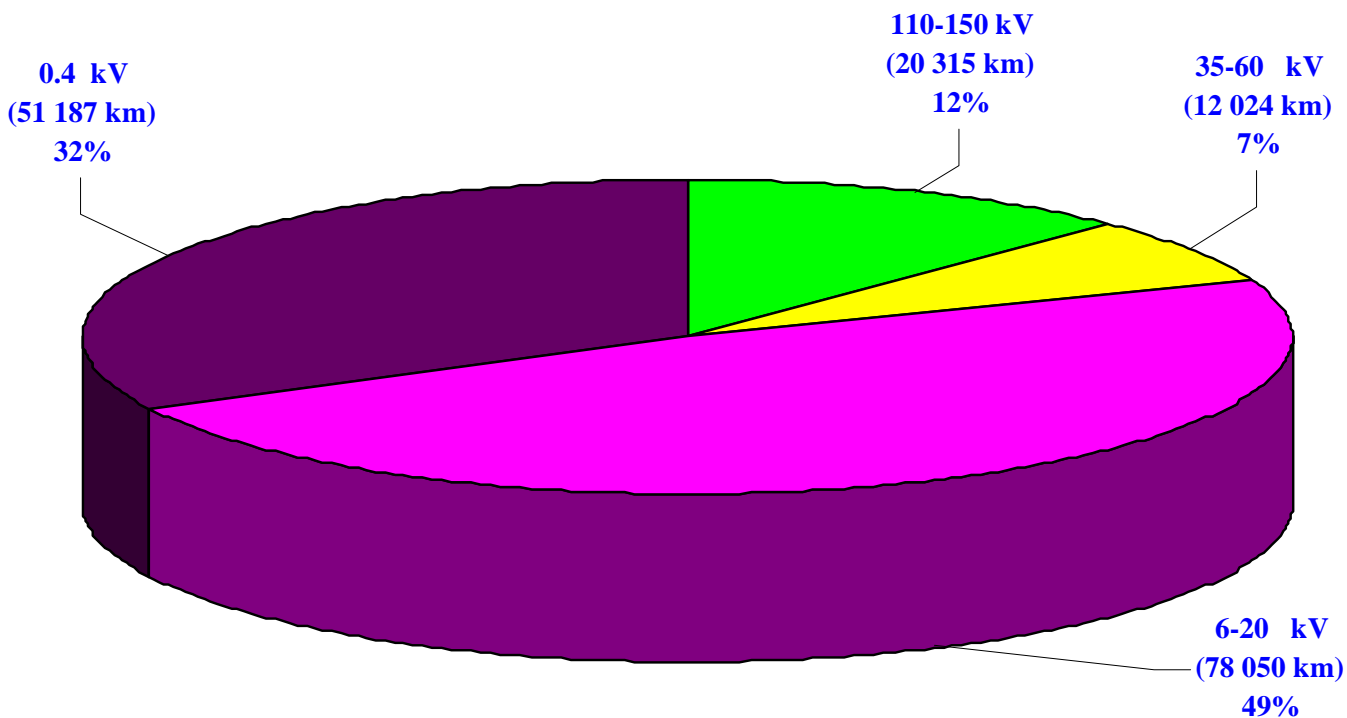


«IDGC of North-West» JSC service zone



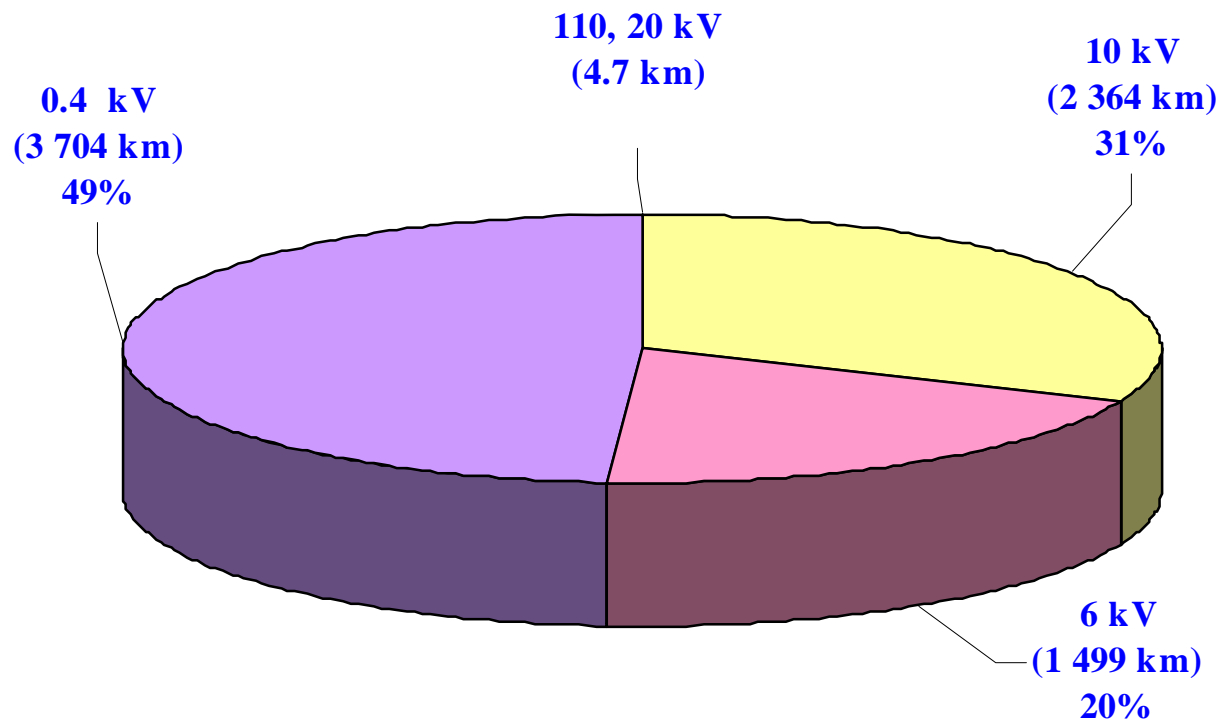


Total length of overhead transmission lines of the «IDGC of North-West» JSC



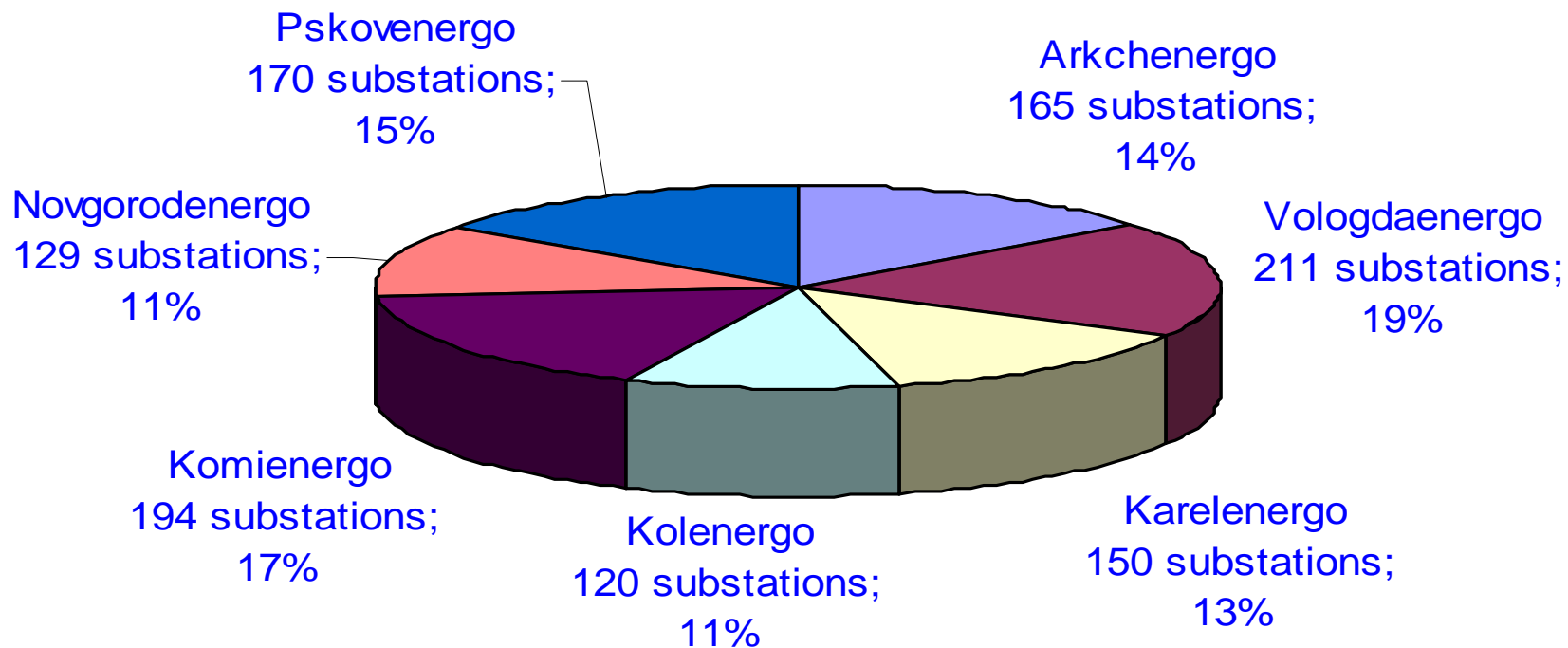


Total length of cable transmission lines of the «IDGC of North-West» JSC





35 kV and higher voltage substations of the «IDGC of North-West» JSC branches





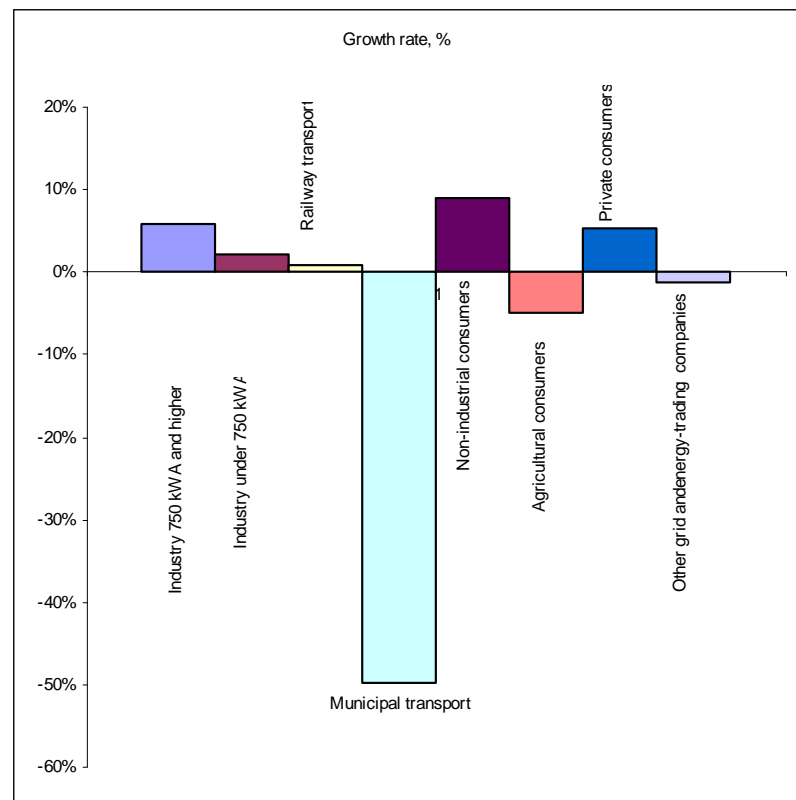
Power transmission dynamics in 2006-2007

Branch	Transmitted, mln kWh		Dynamics	
	Actual data		2007-2006	
	2006	2007	mln kWh	%
Arkchenergo	3442	3515	73	2.1
Vologdaenergo	9301	9727	426	4.6
Kolenergo	10879	10908	29	0.3
Karelenenergo	6433	7125	692	10.8
Komienergo	5183	5397	215	4.1
Novgorodenergo	2653	2809	156	5.9
Pskovenergo	1516	1569	52	3.5
«IDGC of North-West» JSC	39408	41050	1642	3.9



Productive supply structure 2006-2007 of the «IDGC of North-West» JSC, ths kWh

№	Consumers	2006	Share, %	2007	Share, %	Difference 2007-2006	Compa rison 2007/ 2006
1	Industry 750 kWA and higher	21 509 258	55%	22 788 380	56%	1 279 122	6%
2	Industry under 750 kWA	3 086 801	8%	3 152 876	8%	66 075	2%
3	Railway transport	2 246 286	6%	2 267 017	6%	20 731	1%
4	Municipal transport	18 826	0.05%	9 472	0.02%	-9 354	-50%
5	Non-industrial consumers	3 164 495	8%	3 449 029	8%	284 534	9%
6	Agricultural consumers	690 134	2%	655 846	2%	-34 288	-5%
7	Private consumers	2 116 131	5%	2 227 805	5%	111 674	5%
8	Other grid and energy-trading companies	6 575 821	17%	6 499 248	16%	-76 573	-1%
	Total	39 407 752		41 049 673		1 641 921	4%





Factors of power transmission growth

- The highest growth of 687 mln kWh (10.8%) of transmitted power was caused by increase of power volumes consumed by the «Kondopoga» JSC, a large enterprise of the Karelia Republic.
- The growth of 426 mln kWh (4.6 %) in Vologdaenergo was caused mostly because of the largest consumer of the Vologda oblast «Severstal» JSC.
- The consumption by the «Transneftservis S» JSC, the «Ukchtaneftegaz» JSC and the «Vorgashorskaya» mine has been increased by 215 mio kWh (4.1%).
- The consumption in Novgorodenergo has been increased by 156 mln kWh (5.9%) mostly because of the «Transneftservis S» JSC and other industrial consumers.



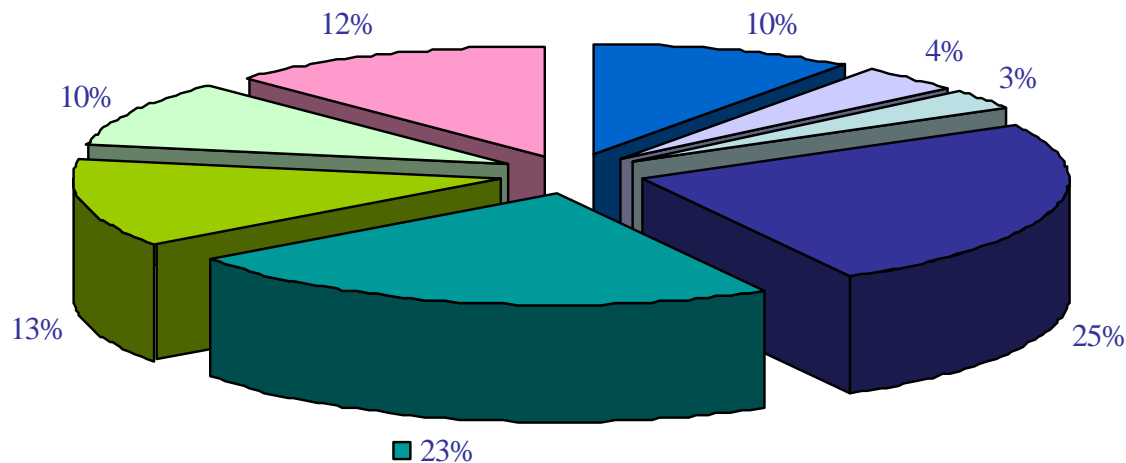
Productive supply structure 2006-2007 of the Vologdaenergo, ths kWh



№	Consumers	2006	%	2007	%	Difference 2007-2006	Comparison 2007/ 2006
1	Industry 750 kVA and higher	5 547 215	60%	5 737 475	59%	190 260	3%
2	Industry under 750 kVA	333 488	4%	338 245	3%	4 757	1%
3	Railway transport	969 870	10%	978 619	10%	8 749	1%
4	Municipal transport	6 271	0.1%	6 763	0.1%	492	8%
5	Non-industrial consumers	280 289	3%	294 256	3%	13 967	5%
6	Agricultural consumers	202 522	2%	188 953	2%	-13 569	-7%
7	Private consumers	166 296	2%	178 062	2%	11 766	7%
8	Other grid and energy-trading companies	1 794 976	19%	2 004 007	21%	209 031	12%
	Total	9 300 927		9 726 384		425 457	5%



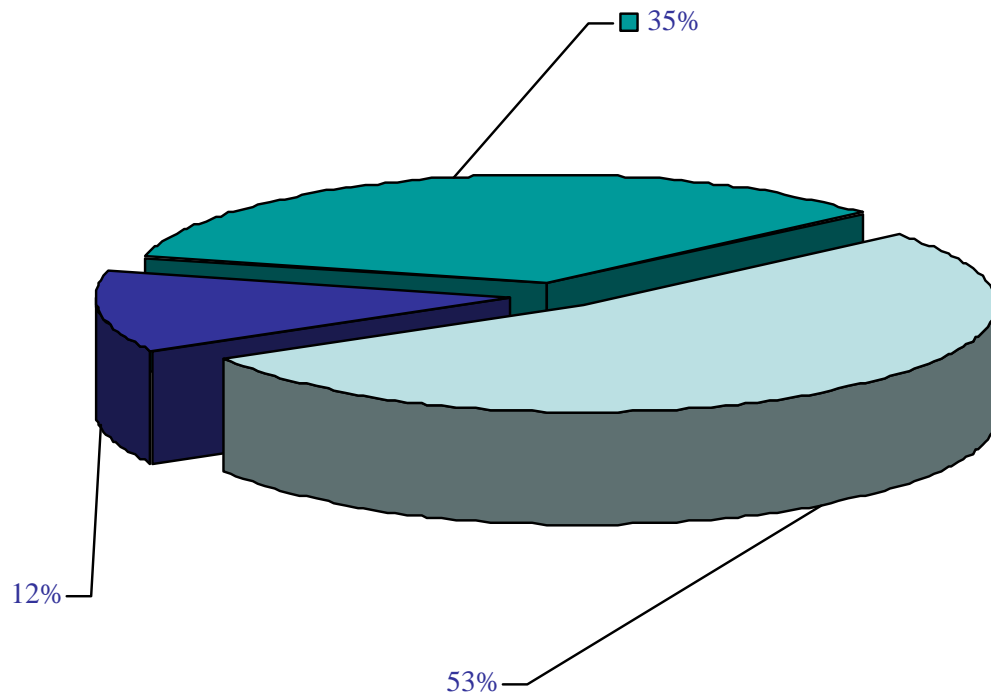
Vologdaenergo maintenance program



- Maintenance of 35-110 kV overhead lines - 5312 ths RUR
- Maintenance of 35-110 kV substations - 41290 ths RUR
- Maintenance of 0.4-10 kV lines - 36978 ths RUR
- Cutting of 10-110 kV lines routes - 21653 ths RUR
- Maintenance of 6-10/0.4 kV substations - 15880 ths RUR
- Maintenance of structures - 19727 ths RUR
- Maintenance of transport - 16371 ths RUR
- Other costs - 6388 ths RUR



Investments of Vologdaenergo



- Construction, reconstruction of substations 35-110 kV 171 046 ths RUR
- Construction, reconstruction of transmission lines 35-110 kV 39 356 ths RUR
- Construction, reconstruction of overhead transmission lines 0,4-10 kV 113 628 ths RUR

