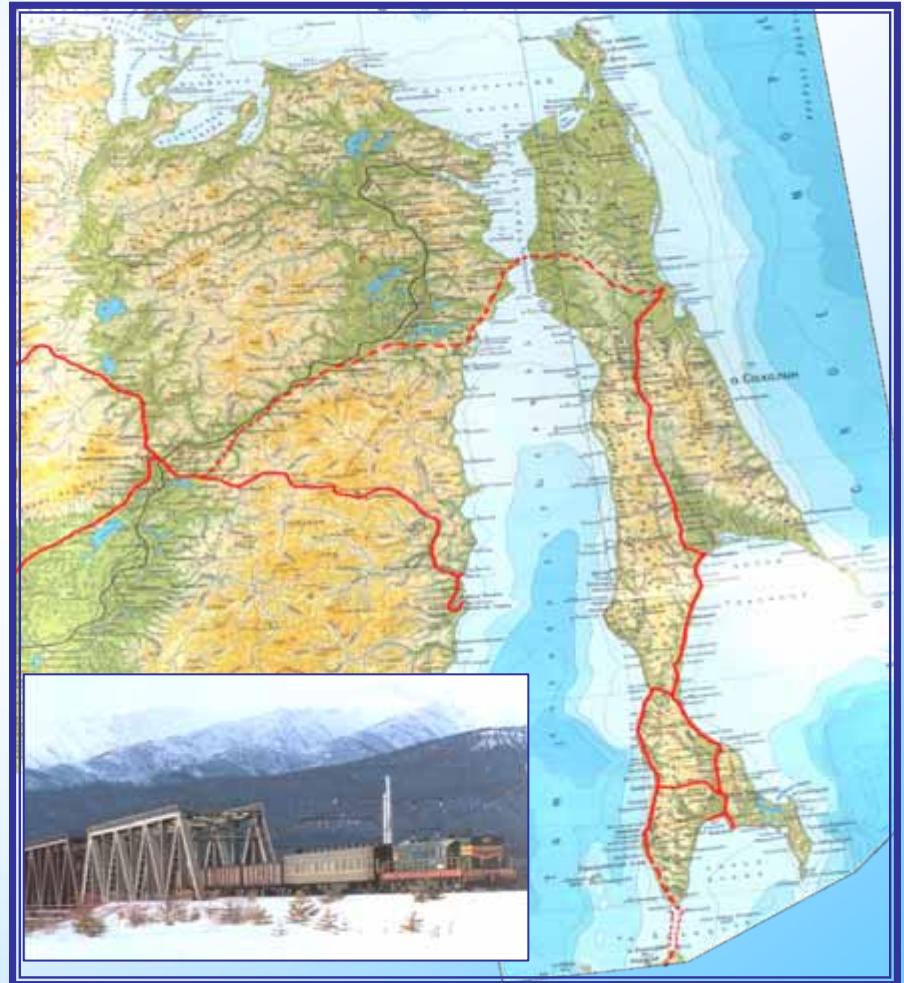




Ministry of the Transportation of the Russian Federation

**Project for
establishment of the
direct railway
communication between
the Mainland and the
Sakhalin Island with
crossing of the
Nevelsky Strait**

2009

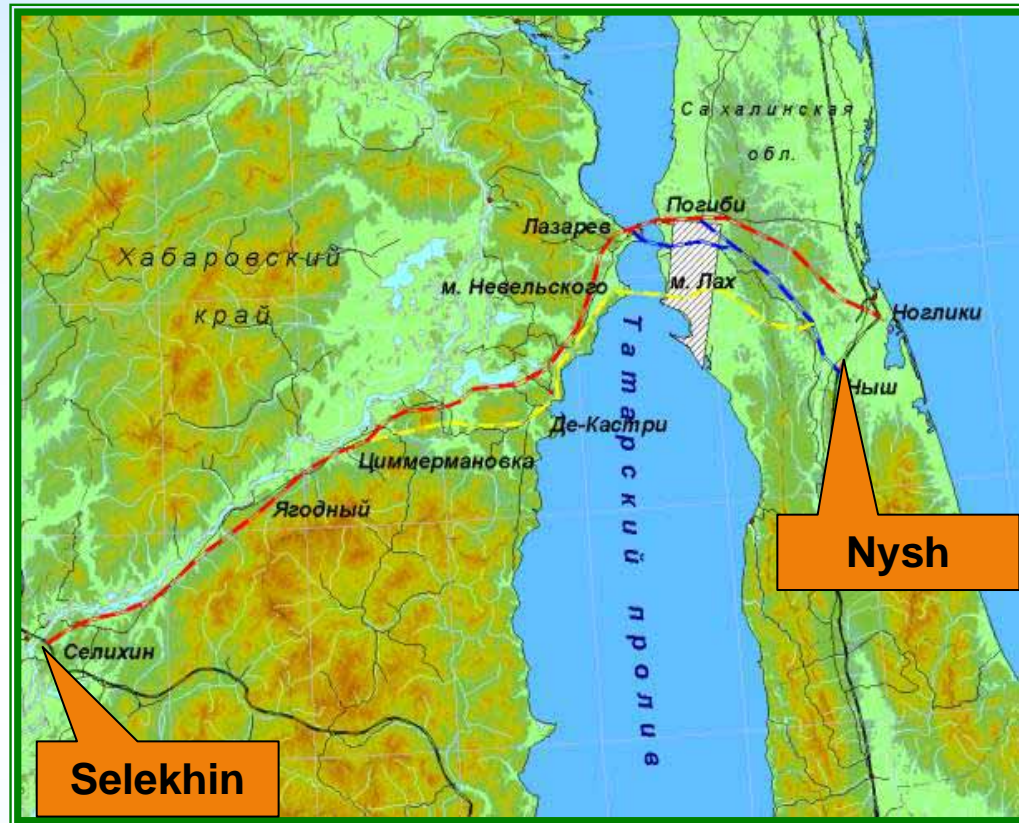




Approved Project Documents

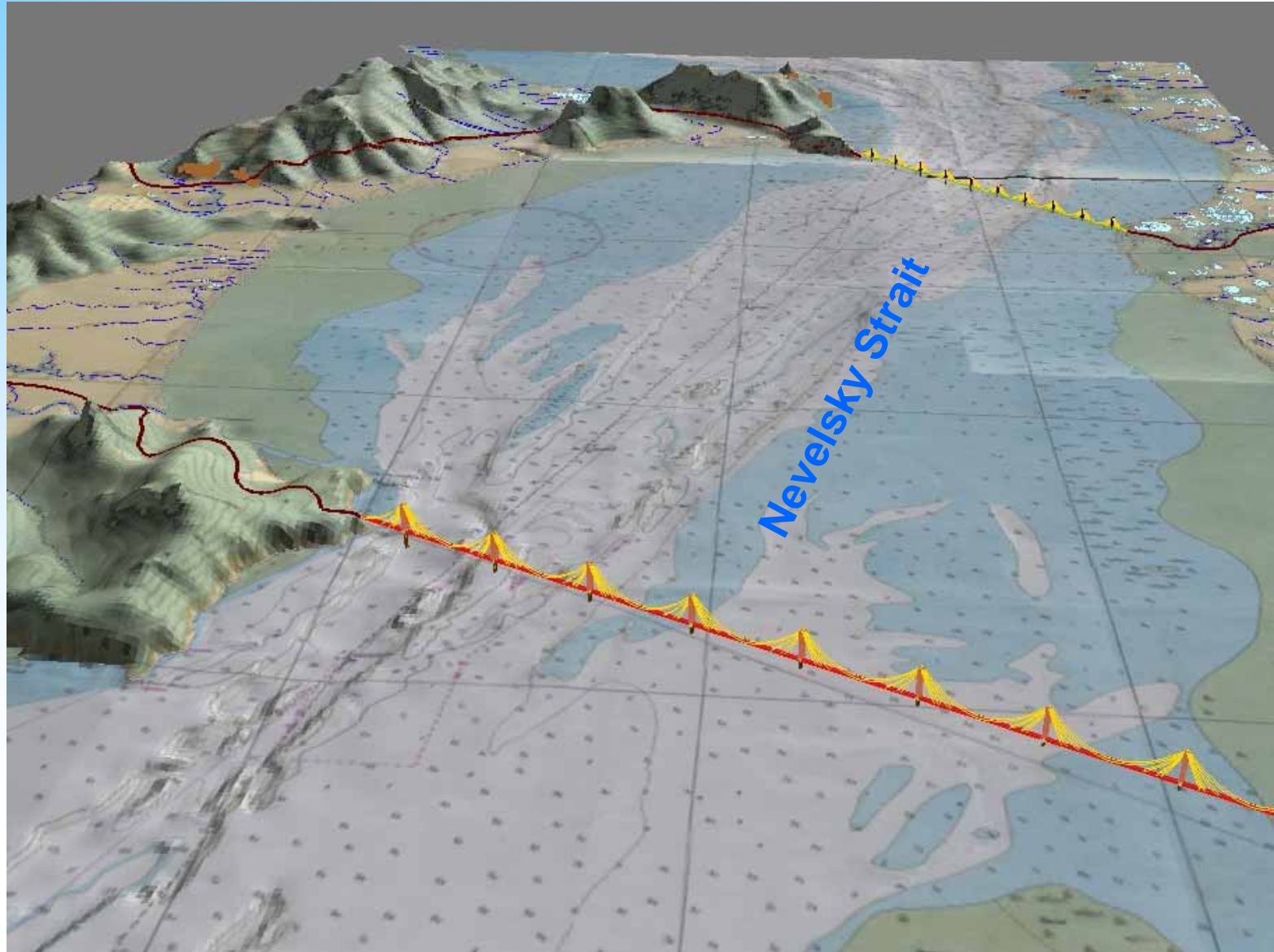
- Transportation Strategy of the Russian Federation up to 2030
- Strategy for Development of the Railway Transport in the Russian Federation up to 2030
- Federal Special-purpose Programme for Development of the Russian Transportation System for 2010 -2015

Scheme of the projected railway line and artificial installations in Selekhin-Nysh direction



Length of the railway line:	562 km		
Length of the strait crossings (km):	tunnel	bridge	dam
	12,4	6,6	15,9-17,8

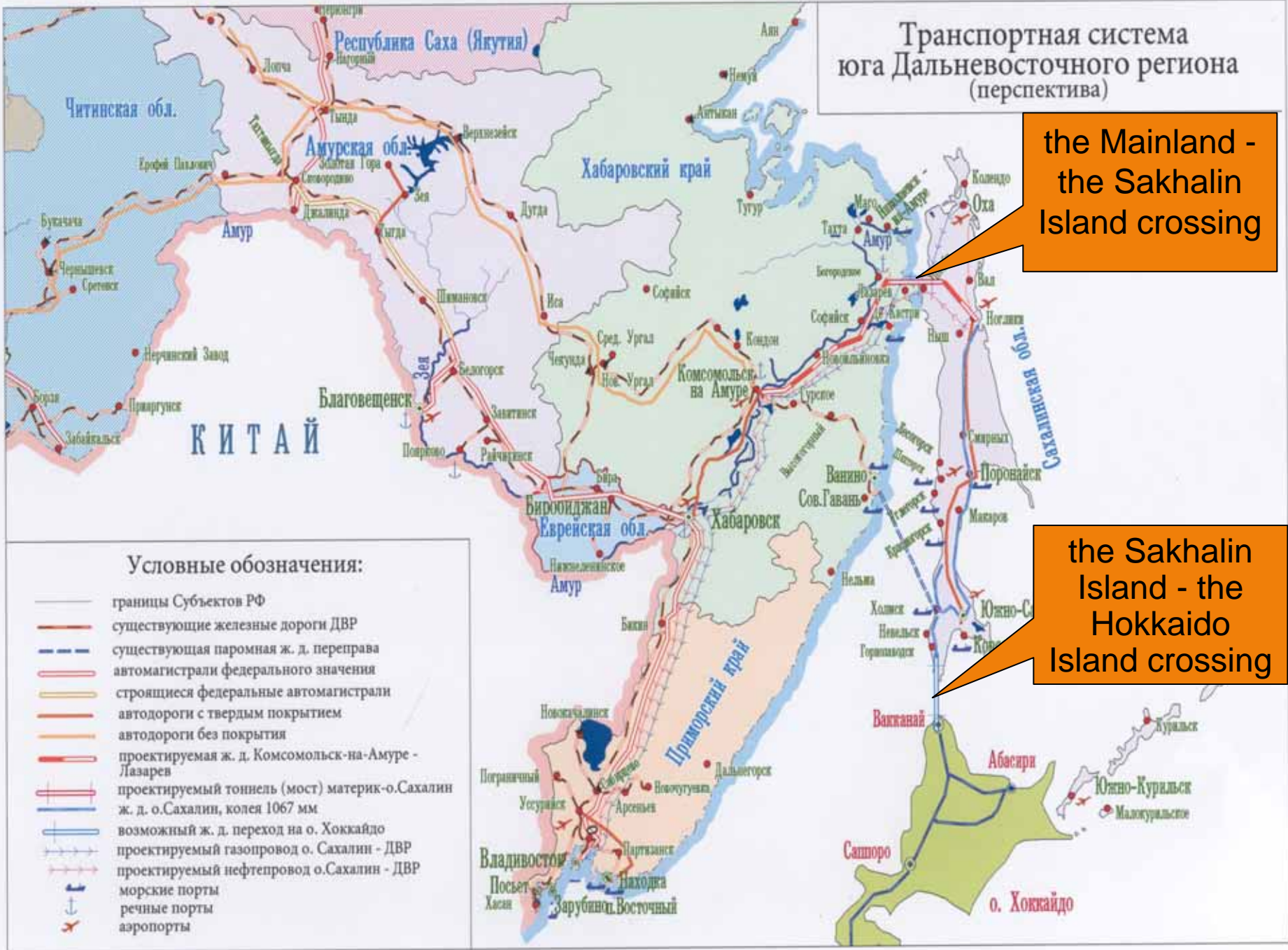
Model of options of the Nevelsky Strait crossing



Транспортная система юга Дальневосточного региона (перспектива)

the Mainland - the Sakhalin Island crossing

the Sakhalin Island - the Hokkaido Island crossing





Main routes of transport of freight through Sakhalin





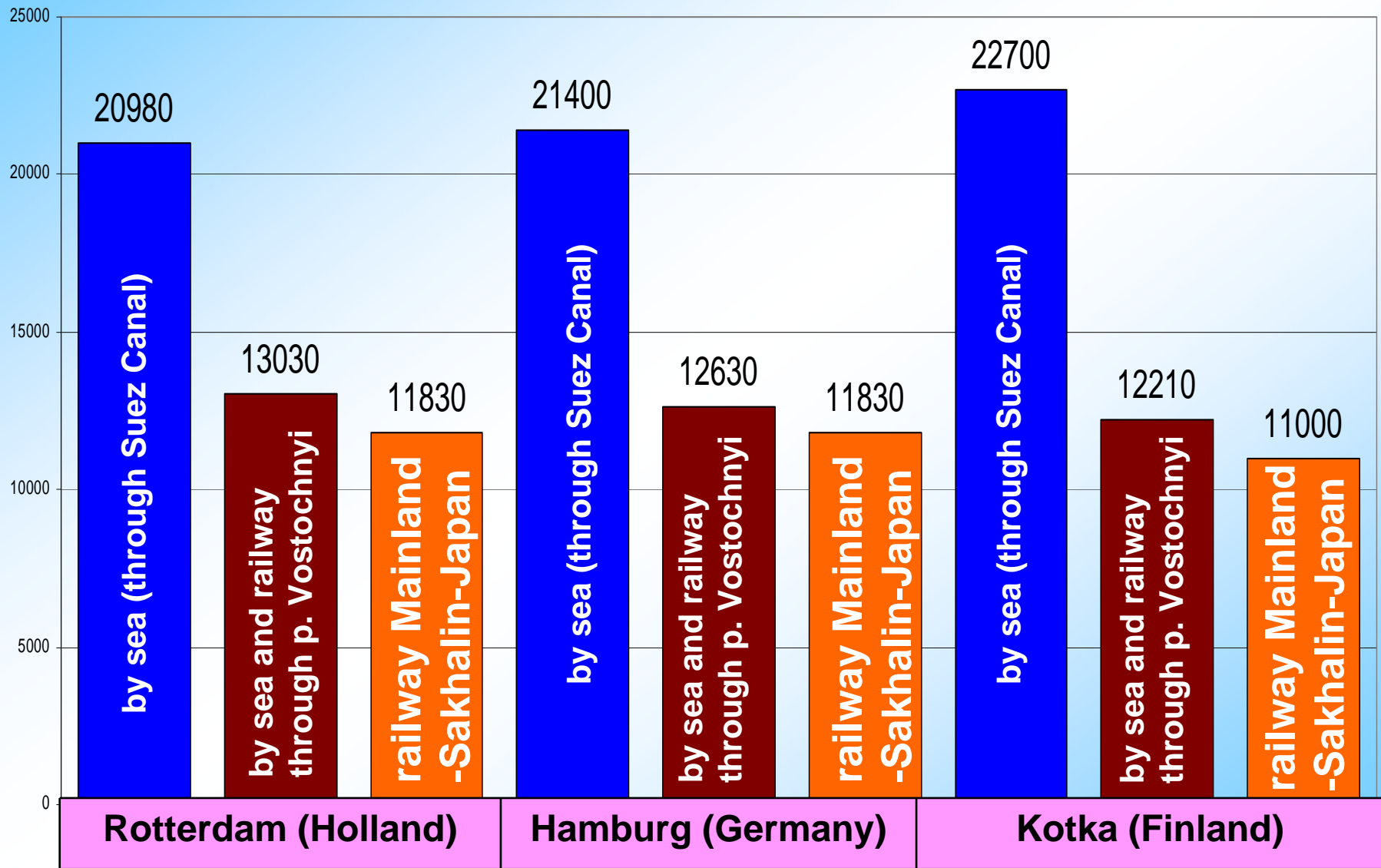
The comparison of delivery of international transit containers

1. by sea (through Suez Canal),
2. by sea and railway through port Vostochnyi,
3. by projected railway Mainland-Sakhalin-Japan

in the directions: Yokohama-Rotterdam (Holland), Yokohama-Hamburg (Germany),
Yokohama-Kotka (Finland)

Figures	Units	Rotterdam (Holland)			Hamburg (Germany)			Kotka (Finland)			
		1	2	3	1	2	3	1	2	3	
Distance	Km	20 980	13 030	11830	21400	12630	11830	22700	12210	11000	
Sea		20 980	1 150	---	21400	1150	---	22700	1150	---	
Railroad				11 880	11830		11430	11430		11060	11000
Including railroads on the territory of Russia				9 850	9800		9850	9800		9910	9850
Byelorussia Poland, Germany, Finland				610 1 420	610 1420		610 1020	610 1020		---	--- 150
Time to distanation	Days	37,3	18,1	11,8	42,8	17,7	11,4	41,2	17,3	11,0	

Distance of transportation from Yokohama to major European cities



Main advantages and conditions of the through railway service

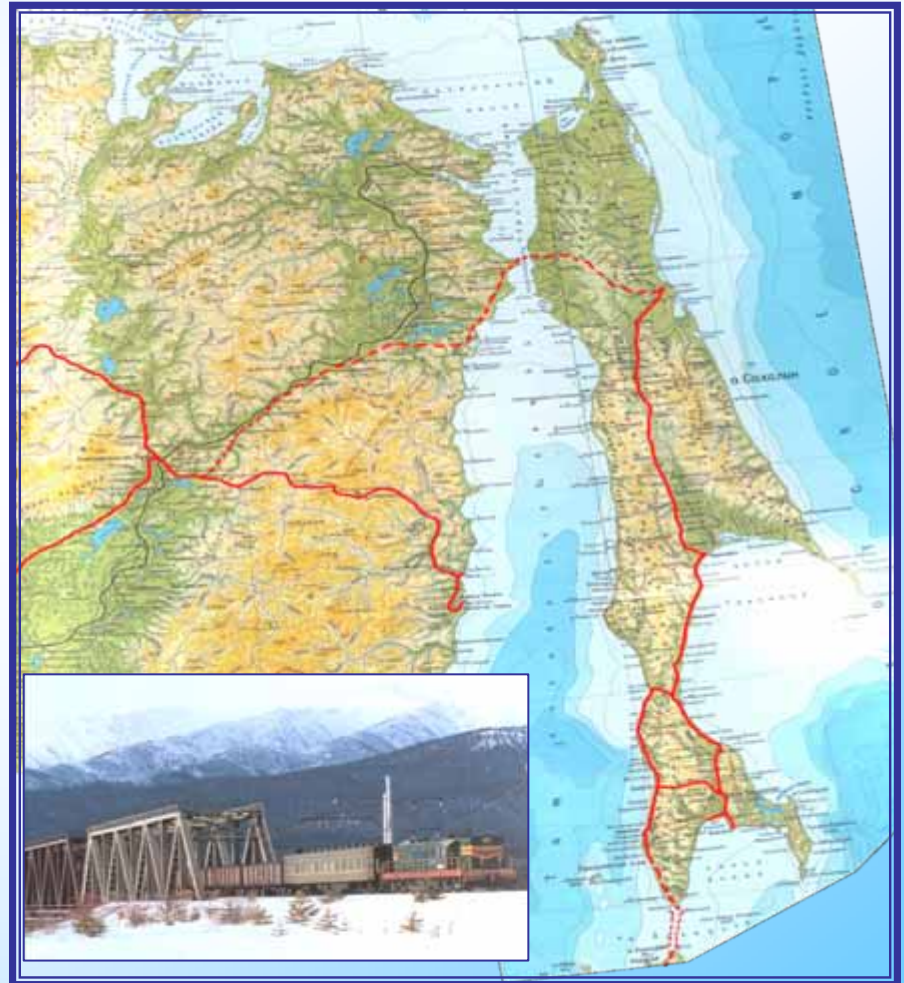


- The time of delivery will constitute one third of the actual.
- Guaranteed safety of the freight.
- There will be no need to accumulate a ship consignment, a lot of 100 containers TEU may be dispatched.
- Weather and season independence.
- Possibility of transportation of technological equipment and other specialized freight in nonstandard tare.
- Long-term legally binding agreement governing rules and conditions of transit traffic, as well as the order the through tariff rate is set up.



Ministry of the Transportation of the Russian Federation

**Project for
establishment of the
direct railway
communication between
the Mainland and the
Sakhalin Island with
crossing of the
Nevelsky Strait**



**Thank you for your
attention**