



Russia-Japan III Investment Forum

Stanislav Zingerenko

Logistics Director of **STERH Corporation**

St.Petersburg,
September 2008

Customs Clearance



Pulkovo Customs

- a part of North-West Customs Administration
- air customs

Baltic Customs

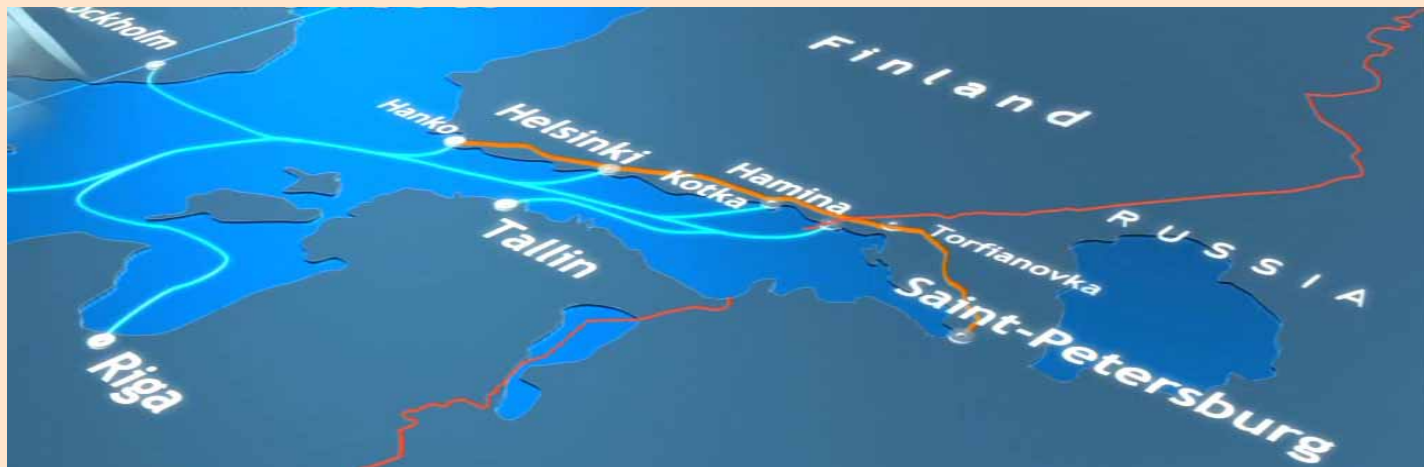
- a part of North-West Customs Administration
- sea customs

St. Petersburg Customs

- a part of North-West Customs Administration
- road and rail customs

Excise Customs

- a part of Central Excise Customs Administration
- customs control for excise cargos





STERH, NYK Logistics and Nissan Cooperation

NYK Logistics provides transportation and delivery of cargoes for Nissan.

In the framework of this project Corporation Sterh carries out a part of logistical services in cooperation with NYK Logistics for Nissan, such as:

- classification of the auto parts
- control of the auto regarding application of interdictions and restrictions
- determination of certifiable auto parts
- accuaring of the neccesary import permissions and certification
- determenation of conditions which should be considered in a foreign trade contract and commercial documents. The given conditions provide form's adaptation and document's maintenances



STERH, NYK Logistics and Nissan Cooperation

The success of such project depends on:

- completeness and timeliness of granting information at the preparatory stage, particularly for classification of spare parts
- efficiency of information exchange between participants at the preparatory stage
- adaptation of commercial documents and foreign trade contract to the Customs Legislation of the Russian Federation
- seamless document exchange, including electronic.
Information about forthcoming deliveries should be given to a custom broker beforehand and contain electronic commercial documents in the format, which provides automatic formation of the customs declaration

STERH Corporation



Founded in 1993, STERH Corporation is the leading company in North-West Russia specializing in Customs, Shipping and Forwarding Services.

Our services include:

- customs clearance for imported and exported goods, including excisable goods, at St. Petersburg Customs, Baltic Customs and Central Excise Customs
- freight forwarding services
- motor transport services (the company operates a fleet of truck trailers, car carriers and container trailers)
- temporary storage services
- import of frozen meat products



In 2007 Corporation's customs clearance services handled 10 % of all tonnage volume of bulk cargo at St.-Petersburg and Baltic customs.

The following customs duties were paid to the budget in 2007:

- 8.68 billion RUR at Baltic Customs
- 7.2 billion RUR at St. Petersburg Customs

Customs brokers of STERH Corporation have been repeatedly named "The Leading Customs Broker"

New Trends in St.Petersburg Logistics



The Corporation is developing in the following directions:

- provide commercial storage service
- participation in development of Russia's North-West transport infrastructure
- building new terminals. Our current projects include Logopark at Osinovaya Roshcha and a container terminal at St. Petersburg Port, which will handle imported and exported goods

New Trends in St.Petersburg Logistics



CFS

Container terminal near St. Petersburg Port, which will handle imported and exported goods.



New Trends in St.Petersburg Logistics



Further development of CFS includes creation of refrigeration facilities with 20 000 tons capacity of frozen production.

A bonded warehouse will be located there.



Customs and Logistics Complex in Osinovaya Roshcha

In 2007, STERH Corporation opened LOGOPARK – a modern 60-hectare multipurpose customs and logistics centre at Osinovaya Roshcha, which offers a full range of storage and customs clearance services.

The complex accommodates:

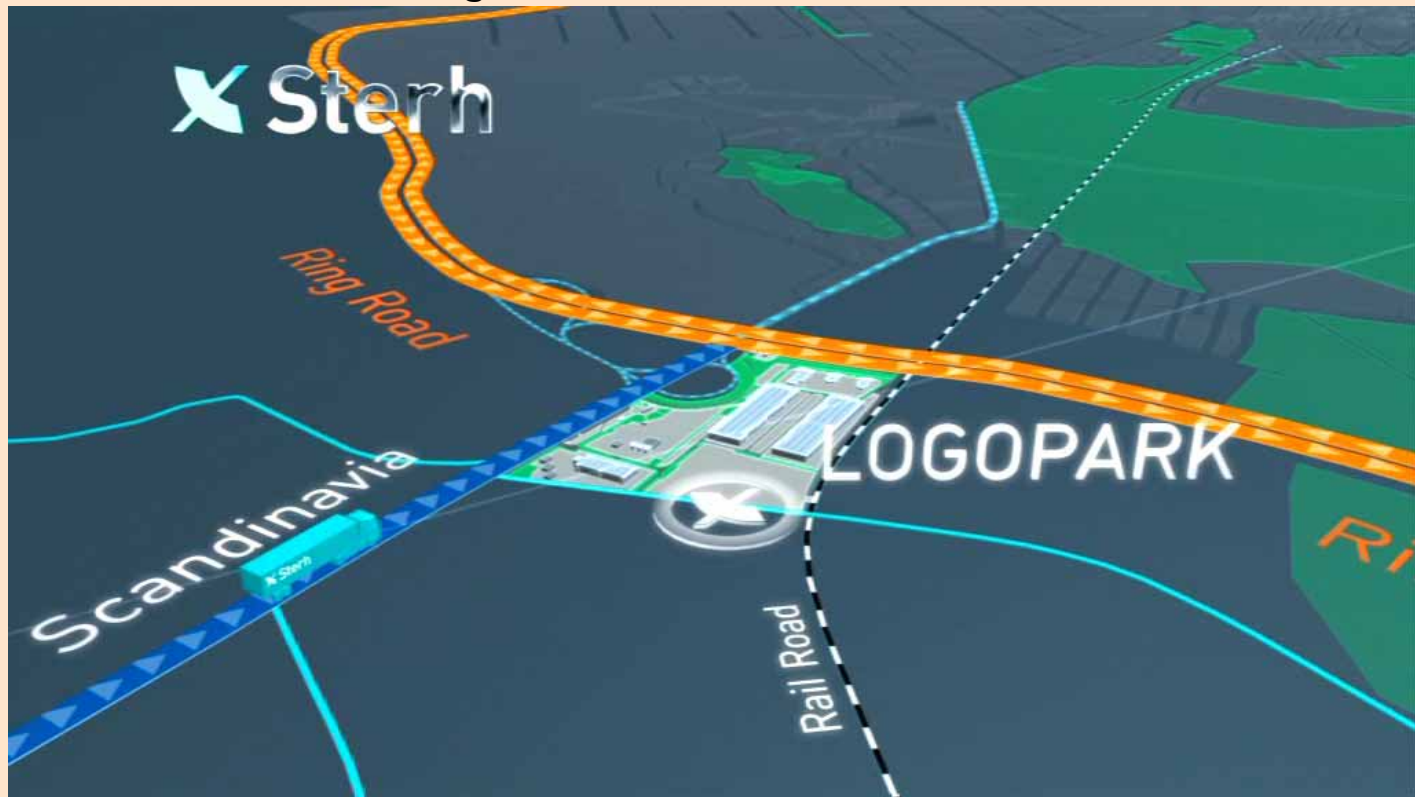
- customs post of St. Petersburg Customs
- processing unit of Excise Customs
- bonded warehouses
- business centre
- administrative and office premises
- high security storage
- site for keeping motor vehicles
- veterinary control post

New Trends in St.Petersburg Logistics



Customs and Logistics Complex in Osinovaya Roshcha

Located at the entrance to St. Petersburg, near the junction of Vyborgskoye Highway (which joins the federal E-18 motorway 'Scandinavia') and the Ring Road.



New Trends in St.Petersburg Logistics



Customs and Logistics Complex in Osinovaya Roshcha



New Trends in St.Petersburg Logistics



STERH Corporation is planning to develop the rest of 43 hectares of Logopark's territory and create a logistics centre, which will include 'A' and 'B'-class storage facilities and refrigerators, and container storage sites.

The total storage area of the centre will exceed 130,000 square meters. The first unit of warehouses will be put into operation in 2009.

Thank you for attention

