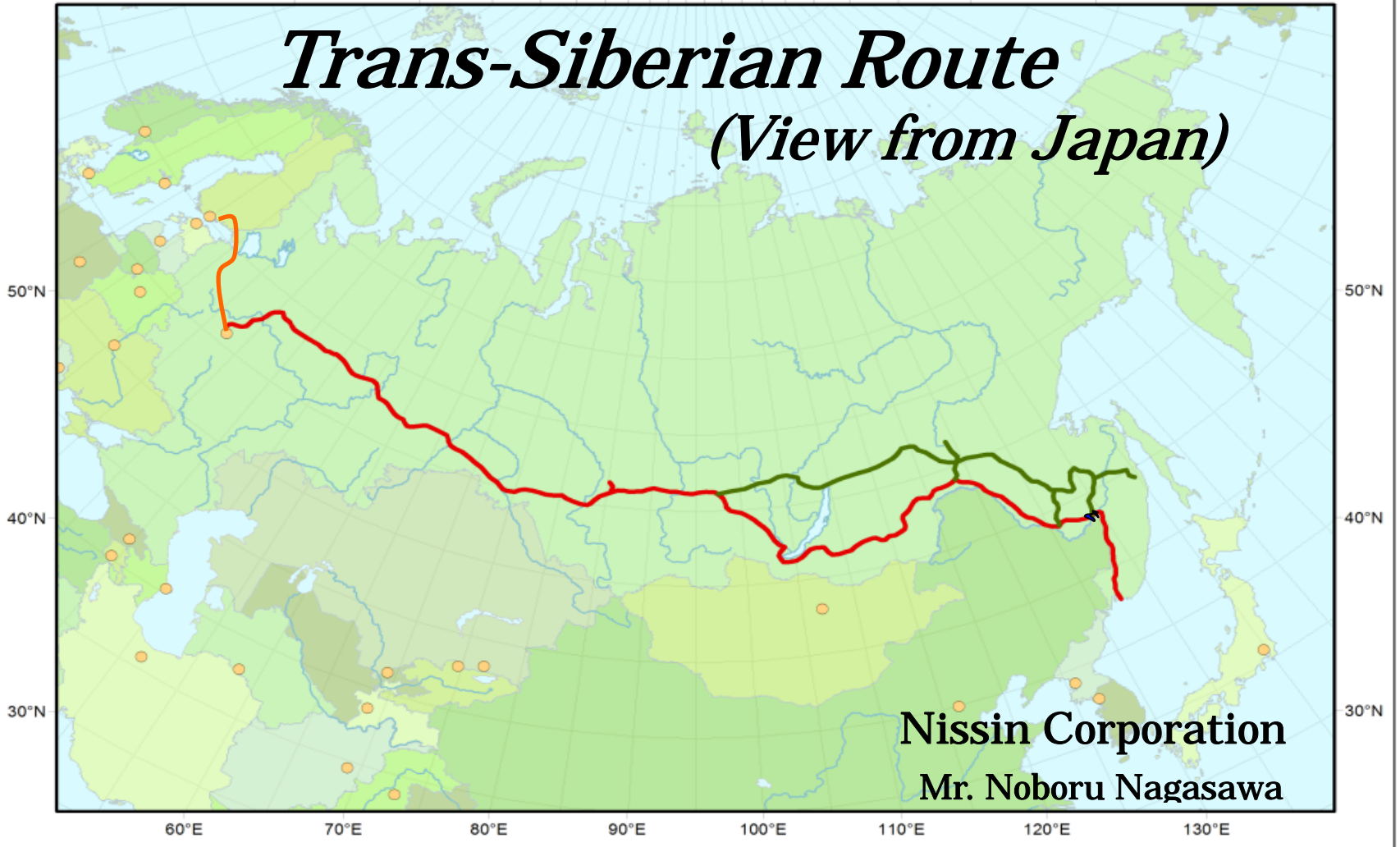


0° 10°E 30°E 50°E 80°E 120°E 150°E 170°E 180° 170°W

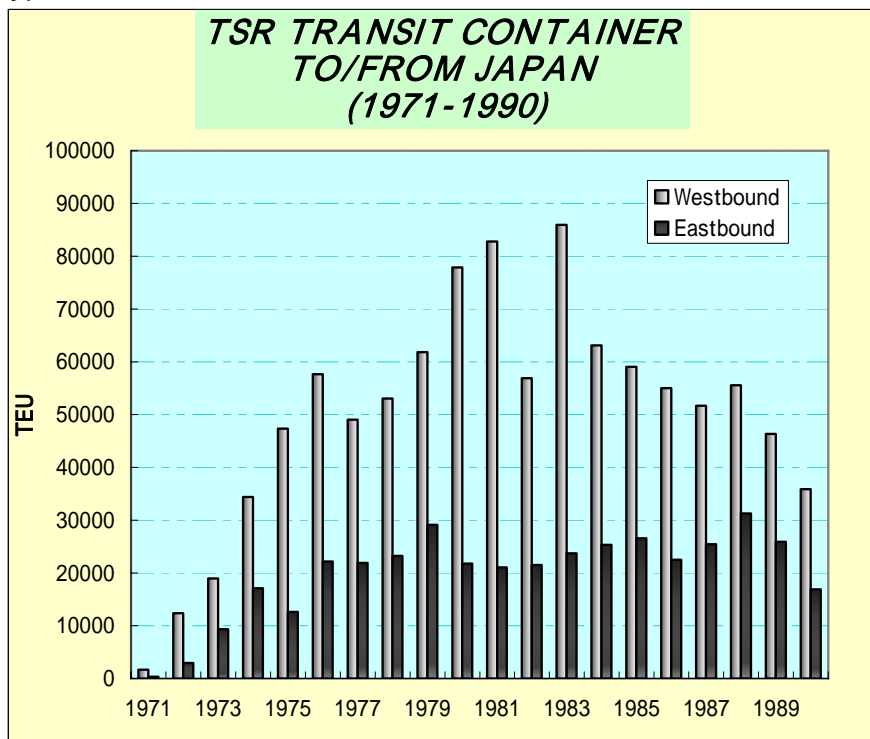
Trans-Siberian Route

(View from Japan)

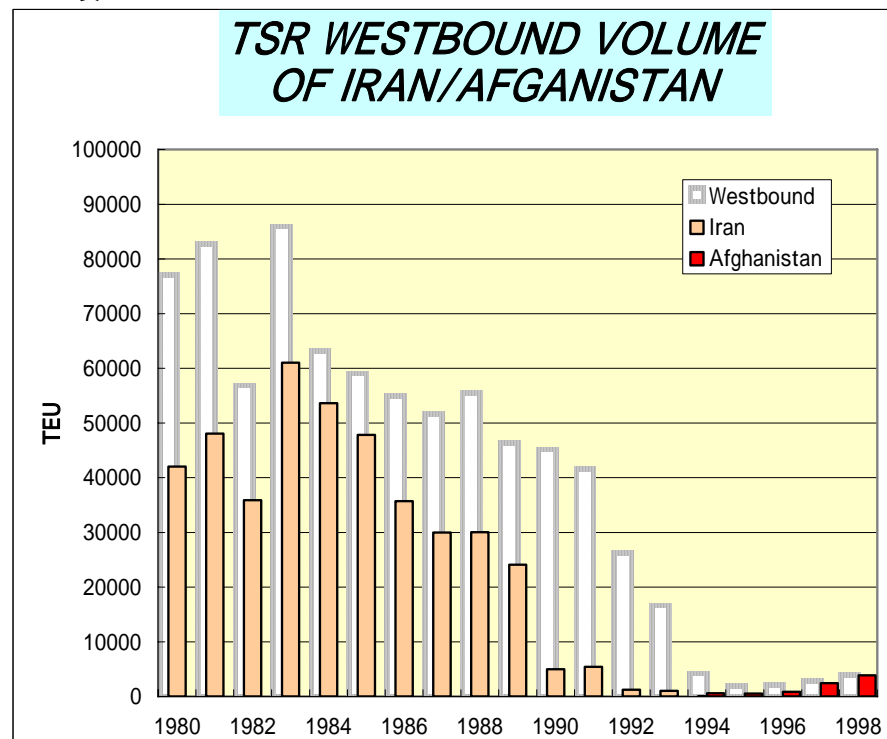


Nissin Corporation
Mr. Noboru Nagasawa

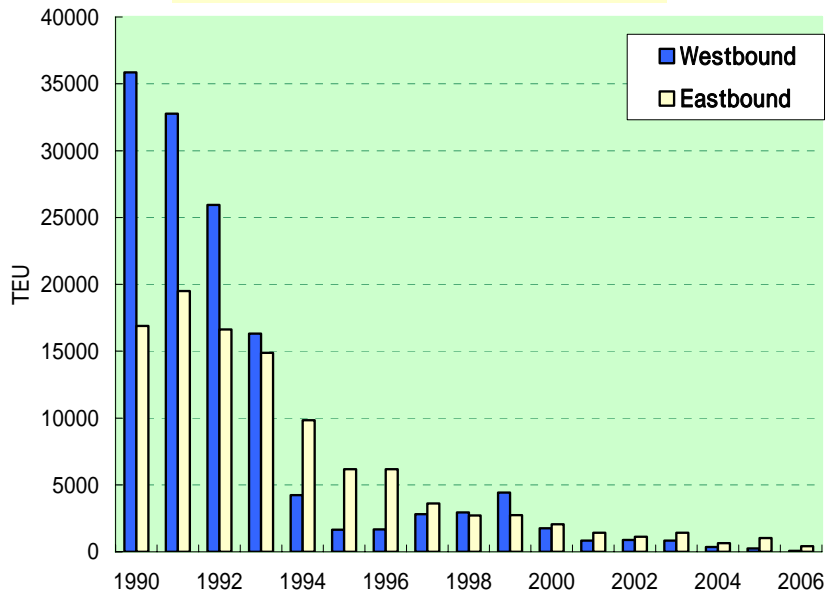
表A



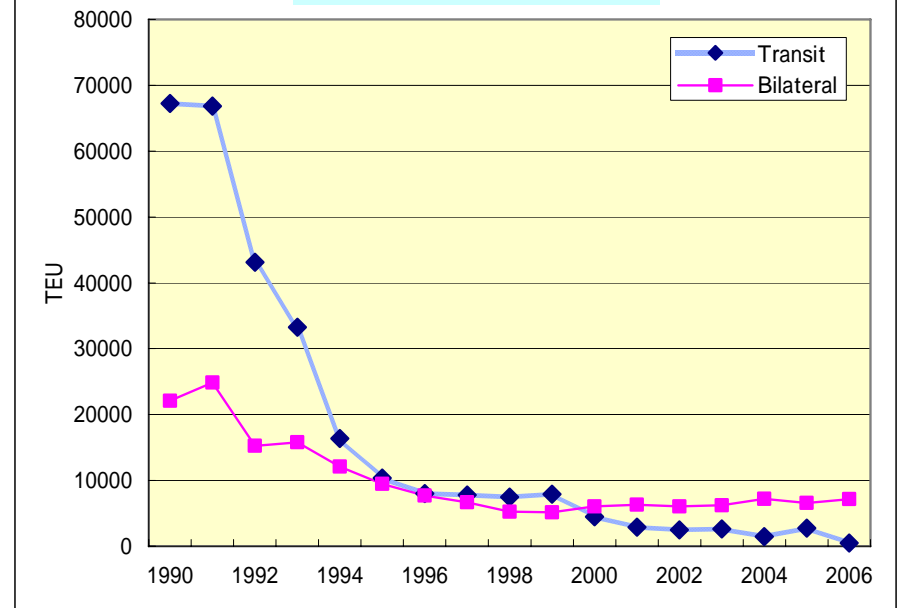
表B



**TSR TRANSIT CONTAINER
TO/FROM JAPAN
(1990 ~ 2006)**



**TSR CONTAINER
OF TRANSIT/BILATERAL
FROM JAPAN**



Promotion of Trans-Siberian Route

1、Transit time

2、Competitive Freight

3、Safety

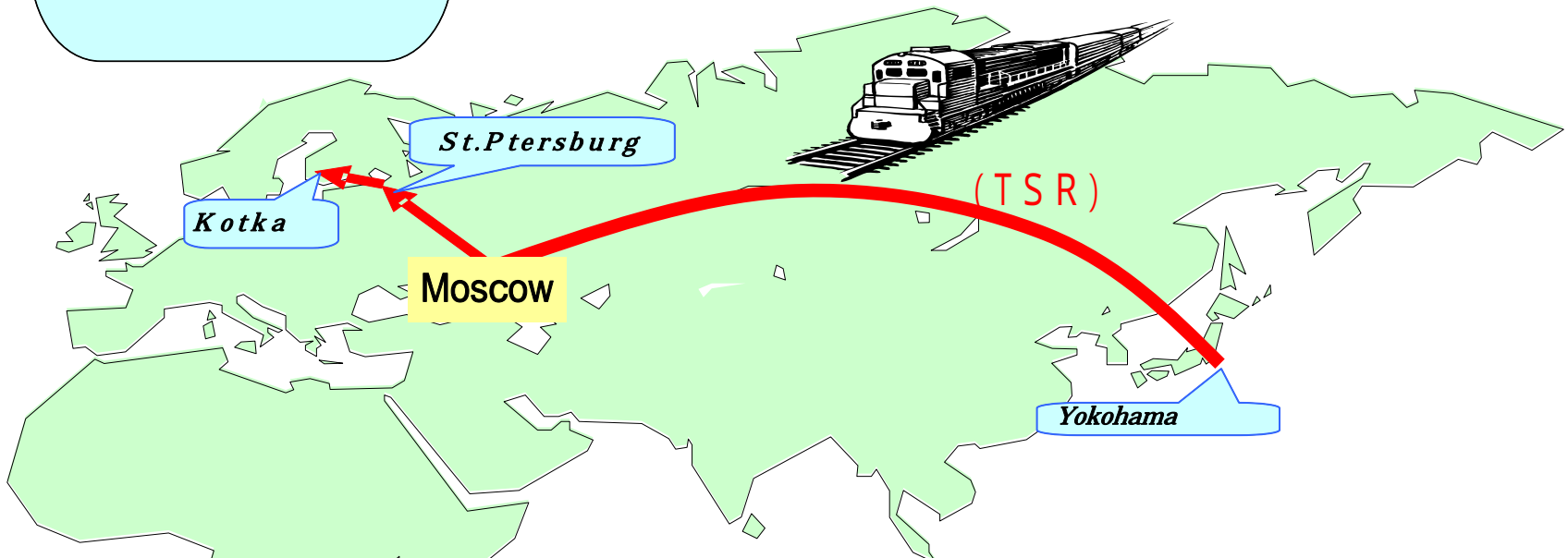
4、Other

(1) Container/Wagon

(2) Vessel Calling

TRANSIT TIME OF TSR (WEST BOUND)

<i>TO</i>	FINLAND (KOTKA)	ST. PETERSBURG	MOSCOW
<i>TSR</i>	22 ~ 27 DAYS	22 ~ 25 DAYS	17 ~ 22 DAYS (DERICT)
<i>DEEP SEA</i>	35 ~ 40 DAYS	35 ~ 40 DAYS	45 ~ 50 DAYS (VIA FINLAND) BY TRUCK



Advantage of Trans - Siberian Route

- 1、 Short Transit Time
- 2、 Long Experienced Rail - Transport with Safety.
- 3、 Alternate & Back - up Route
- 4、 Modalshif



Please contact to :

Nissin Corporation

Russian Dept

Tel: 03-3238-6554

Fax: 03-3238-6579

E-mail : MA-FUJII@nissin - tw.co.jp